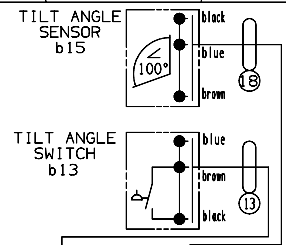
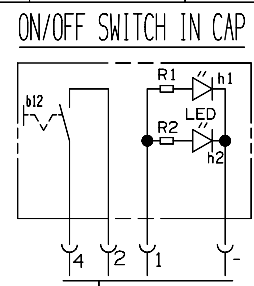


PIN IDENT.	FUNCTION
1	WARN LIGHTS WHEN P/F OPEN
2/27	PERM HOT LEAD FOR ON OFF SWITCH
3	ENGAGES MOTOR SOLENOID FROM SWITCHES
4	CONTROL POWER FROM ON OFF SWITCH
5	LIFT SIGNAL
6	LOWER SIGNAL
12	ENGAGES SHIFT SOLENOID S5
14	TILT DOWN VALVES
15	LOWER DOWN VALVES
7	HOT LEAD TO WARN LIGHTS

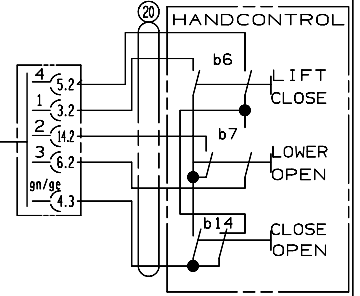
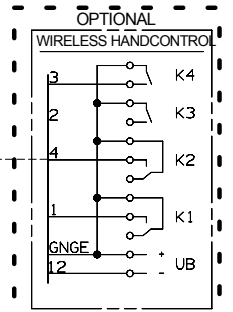
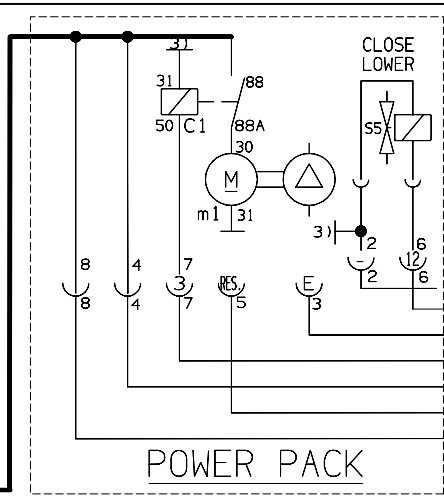
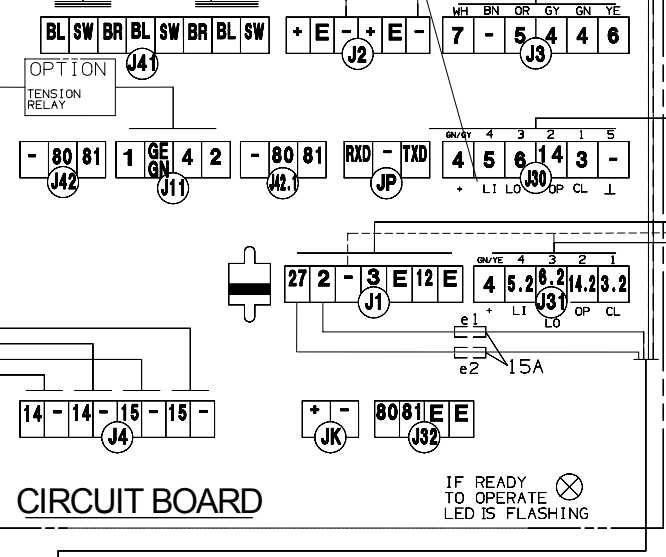
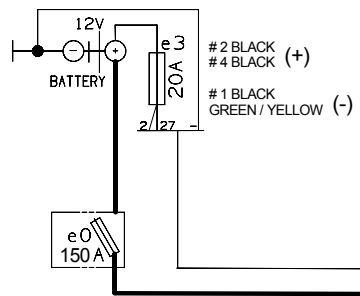
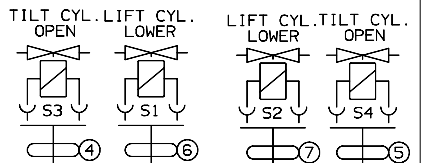
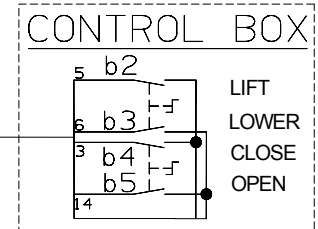
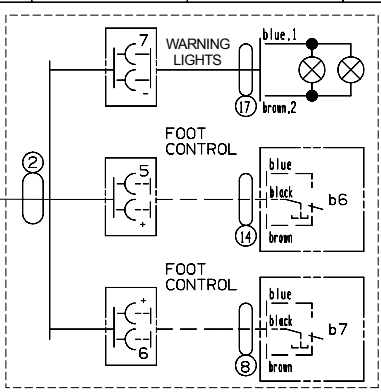
- * Good voltage is the most important first step in troubleshooting the litgate.
- * Test voltage at the J11 connection between wire 4 and ground (min. 10 V).
- * When testing for electricity on the individual solenoid plug at the cylinder, always test voltage between the two prongs on the plug itself. (min. 7 V)
- * **After troubleshooting, carefully close the rubber cap and secure it with the plastic strap.**

- Legend :**
- gn : green
 - bl : blue
 - br : brown
 - wt : white
 - ye : yellow
 - sw / bk : black
 - gy : green-yellow

- * When testing the voltage on different locations, always ground on plug J1.
- Tilt - Up bypass -- J11 #4 min. 8.5 V



- LI : Lift Up
- LO : Lower Down
- OP : Open Gate
- CL : Close Gate



CIRCUIT DIAGRAM
ILF KPLUS

E	A19352	27.08.07	LARI	Datum	Name
D	A 18970	16.11.05	BLEY	Bearb.	THOSS
C	A 18886	07.07.05	THOSS	Gepr.	BLEY
A.-I.	A.-M.	Datum	Name	Norm	01.08.08 HACKBARTH
Ers.fuer:		Ursprr.			

Urheberschutz
nach
DIN 34

12V

BLATTZAHL
SHEET-0TY.
1

MBB
Liftsystems AG
Fockestrasse 53
27777 Ganderkesee