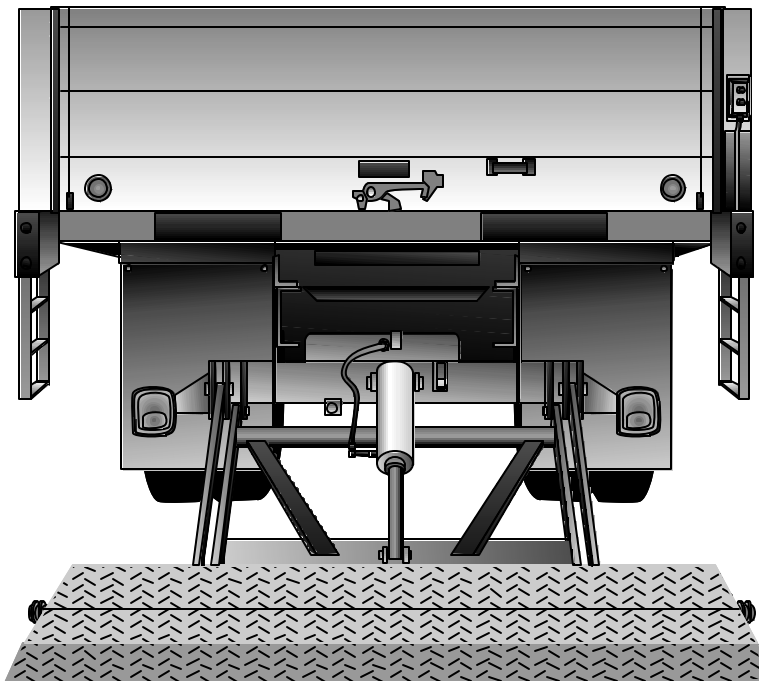




# Owner & Parts Manual

## LH Hide-A-Way<sup>®</sup>

### Tuckunder Style



10900 Kenwood Road • Cincinnati, OH 45242  
Ph: 513.891.6210 • Toll-Free: 866.539.6261  
Fax: 513.891.4901  
[www.leymanlift.com](http://www.leymanlift.com) • [sales@leymanlift.com](mailto:sales@leymanlift.com)

# INTRODUCTION

This manual contains the operating procedures on the equipment your company is using that was manufactured by Leyman Manufacturing Corporation.

Past experience has indicated that it is most unwise to operate these units without proper instructions which should be instituted by the purchaser.

While these products have certain safety features engineered into their design, they are all operated by human beings. Therein lies the problem of safety and one should always have caution in mind when operating this or any other machine that has parts that weigh several hundred pounds.

Again, let us remind you that there are moving parts on this product that weigh several hundred pounds. These parts, when not under proper control, can cause physical damage to the operator. Because of the weights that are involved; carelessness and neglect of training can make these units dangerous.

Do not overload this product. Maintain it properly. Stand clear of moving parts. Operate as instructed.

This lift gate has a long life expectancy and will take some abuse. Use good judgement when operating this equipment.

## PLEASE FILL IN FOR YOUR RECORDS

CUSTOMER:	_____
MODEL:	_____
CAPACITY:	_____
TYPE:	_____
POWER:	12 VOLT
PLATFORM:	_____
SERIAL #:	_____
OPTIONS:	_____
	_____
	_____
	_____
MAXIMUM HEIGHT	54"
HYDRAULIC PRESSURE	LOADED 2,200 PSI AT THE PUMP
AMP DRAW	LOADED 270 UNLOADED 100

**WHEN PLACING PARTS ORDER, YOU WILL NEED THE SERIAL# AND MODEL# OF THE LIFT GATE.**

## WORDS OF CAUTION

---

---

1. BEFORE ANY MAINTENANCE IS PERFORMED ON THIS UNIT, READ AND UNDERSTAND THIS MANUAL COMPLETELY.
2. DO NOT STAND ON OR BEHIND THE PLATFORM WHEN OPERATING GATE IN THE FOLDED POSITION.
3. MAKE SURE THE GROUND IS CLEAR UNDER THE PLATFORM WHEN LOWERING.
4. DO NOT STAND IN FRONT OF PLATFORM WHEN LOWERING FROM VERTICAL POSITION OR OPERATING IN ANY MANNER.
5. NEVER EXCEED THE RATED LOAD CAPACITY OF THIS GATE.
6. DO NOT ALLOW PERSONS TO OPERATE THE UNIT UNLESS THEY HAVE BEEN PROPERLY TRAINED TO DO SO.
7. USE ONLY FACTORY AUTHORIZED PARTS FOR REPLACEMENT.
8. CHECK THE AREA AROUND THE UNIT FOR PERSONS BEFORE OPERATING THE LIFT GATE.
9. THIS LIFT GATE SHOULD OPERATE SMOOTHLY AND THE ONLY NOISE THAT SHOULD BE HEARD IS THE POWER UNIT. ANY AUDIBLE SOUNDS OTHER THAN THE NORMAL POWER UNIT OPERATION SOUND SHOULD BE THOROUGHLY INSPECTED AND THE CAUSE OF THE NOISE SHOULD BE PIN-POINTED AND CORRECTED.
10. DO NOT OVER LOAD- THE MAXIMUM RATED CAPACITY IS BASED ON AN EVENLY DISTRIBUTED LOAD ALL OVER THE PLATFORMS FLAT SURFACE.
11. ALWAYS LOAD AS CLOSE TO THE CENTER OF THE PLATFORM AND AS CLOSE TO THE CENTER OF THE TRUCK SILL AS POSSIBLE.
12. 150 AMP CIRCUIT BREAKER (NOT SUPPLIED) MUST BE INSTALLED BETWEEN THE STARTER SOLENOID AND THE BATTERY SOURCE.  
ORDER FROM FACTORY AS OPTION #111 CIRCUIT BREAKER.

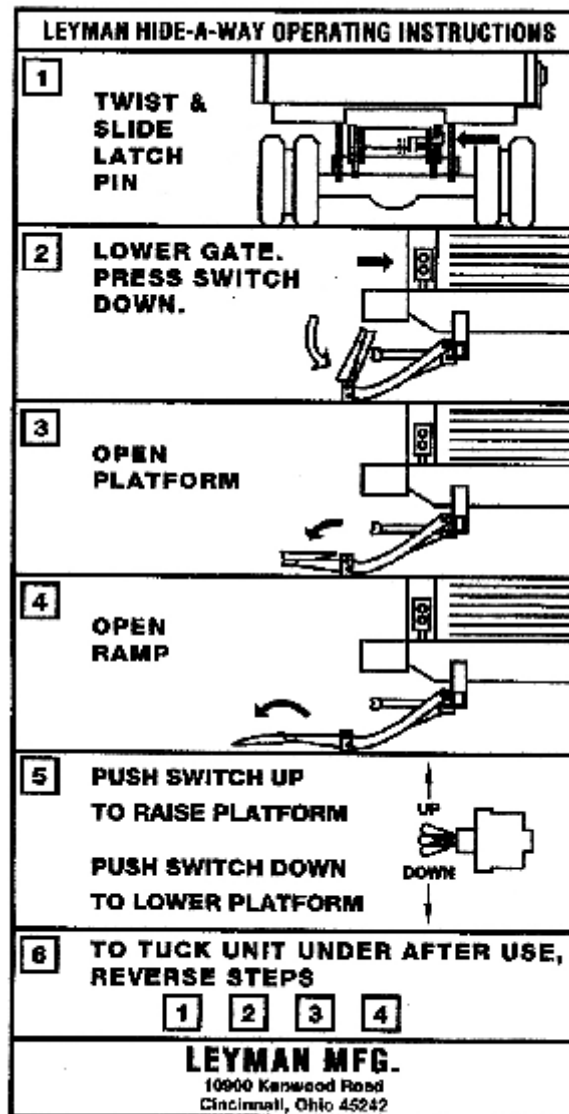
WE URGE THE INSTALLATION OF A SAFETY CUT-OFF SWITCH FOR ALL TRUCK MOUNTED LIFT GATES. THESE ARE INSTALLED IN THE CAB OF THE VEHICLE, SO THAT THE POWER TO THE LIFT GATE CAN BE TURNED ON-OFF.

THIS MANUAL REFLECTS MOST CHANGES AND UPDATES OF MATERIALS THAT ARE COMMON TO THIS TYPE OF LIFT GATE. SOME MAY DIFFER DUE TO INDIVIDUAL CUSTOMER REQUIREMENTS. THIS MANUAL HAS BEEN ESTABLISHED TO REFLECT THE COMMON ITEMS.

**WARNING** SINCE THIS GATE HAS GREASELESS BEARINGS IN THE MAIN PIVOT POINTS, (TENSION AND COMPRESSION ARMS AND CYLINDER PIVOTS) ANY WELDING ON THESE PARTS MUST BE GROUNDED, OR YOU WILL DAMAGE THE CYLINDER.

## Operation of the Lift Gate

- Before operating the lift, read and understand this decal, urgent warning decal, and the Owner's Manual.
- Do not stand behind the lift gate while unfolding or using the platform.



P55307



# PREVENTATIVE MAINTENANCE SCHEDULE

MAINTENANCE by CYCLES

MODELS LH, LHR, LLB

DATE: \_\_\_\_\_

CUSTOMER		GATE MODEL #	
LOCATION		GATE SERIAL #	
VEHICLE #		SERVICED BY	

v = OK                                      A = ADJUSTED                                      N = NOT APLICABLE                                      X = REPAIR

2000	MOTOR / PUMP COMPONENTS	2000	MOTOR / PUMP COMPONENTS
	Check batteries for corroded, loose, or broken connections		Check charge line / power line for corroded, loose or broken connections at both ends spray with Bowman # 21948 connection protection or equivalent
	Check batteries for proper voltage level and charging		Check amp draw of motor with batteries fully charged batteries and tight clean connections spray with Bowman # 21948 connection protection or equivalent
	Check toggle switch for corroded, loose, or broken connections		Check all ground wires for corroded, loose, or broken connections spray with Bowman # 21948 connection protection or equivalent
	Check pop-it solenoids for proper operation		Check pressure setting of relief valve
	Check reservoir for proper oil level (Gate open and down on the ground and tilted 1" from top of tank)		Clean all wiring connections in pump and battery box and spray with Bowman # 21948 connection protection or equivalent
	Inspect circuit breakers and fuses for proper operation		Check pressure setting See Owners Manual for settings

2000	STRUCTURE COMPONETS	2000	STRUCTURE COMPONETS
	Check for proper operation of gate up/down, fold/unfold		Check all cylinder pins for loose, broken, or missing roll pins
	Check platform and lifting gear for any impact damage		Check all pivot pins for loose, broken, or missing roll pins and snap rings
	Check cylinder and hydraulics line for leaks, abrasions, cuts, or broken lines and fittings		Check primary and secondary platform for damage

2000	LUBRICATION		PERIOICAL CHECK LIST
	Grease power unit and battery box door hinges with # 1 lithium grease	12000	Check all pivot point bushings for wear or damage
		16000	Flush hydraulic system and change hydraulic oil
			Clean and repaint as necessary

Check owner's manual for proper hydraulic oil, motor amp draw, and pressure setting of power unit

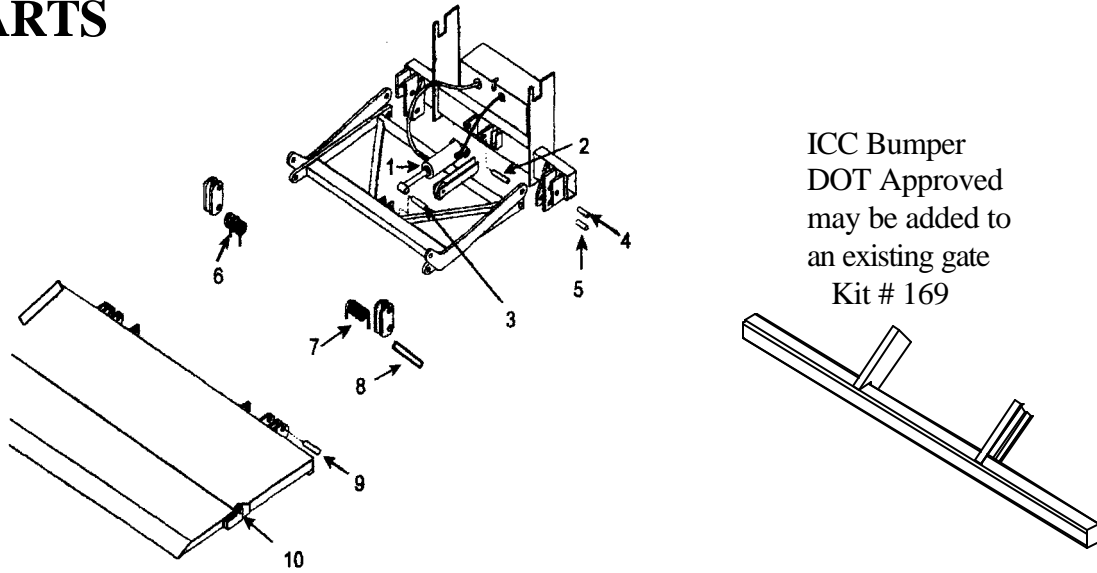
Revised Feb. 2006

# TROUBLE SHOOTING CHART

## ALL LH MODELS

<b>PROBLEM</b>	<b>PROBABLE CAUSE</b>	<b>REMEDY</b>
The motor is running, but the platform will not go up, or reach floor of vehicle or gate will not lift rated load.	<ol style="list-style-type: none"> <li>1. Insufficient oil in power unit tank.</li> <li>2. Lowering valve stuck partially or fully open.</li> <li>3. Power unit relief valve is set too low.</li> </ol>	<ol style="list-style-type: none"> <li>1. Fill tank.</li> <li>2. Clean or replace.</li> <li>3. Turn screw in all the way-then back off one turn.</li> </ol>
The platform will not go up or reach floor level and the motor does not run.	<ol style="list-style-type: none"> <li>1. Battery is low.</li> <li>2. Power line is loose.</li> <li>3. Poor switch connections.</li> <li>4. Cab switch is turned off.</li> <li>5. Defective starter solenoid.</li> <li>6. Tripped circuit breaker.</li> </ol>	<ol style="list-style-type: none"> <li>1. Recharge the batteries.</li> <li>2. Check the connection, if loose tighten. Also check for corrosion and clean if necessary.</li> <li>3. See #2</li> <li>4. Turn the switch on.</li> <li>5. Replace part</li> <li>6. Reset the circuit breaker.</li> </ol>
Platform will not lower.	<ol style="list-style-type: none"> <li>1. Battery is low.</li> <li>2. Bad ground or electrical connection.</li> <li>3. Lowering valve is bad.</li> </ol>	<ol style="list-style-type: none"> <li>1. Recharge the batteries.</li> <li>2. Check for corrosion and tighten.</li> <li>3. Check the coil.</li> </ol>
Platform creeps downward.	<ol style="list-style-type: none"> <li>1. Defective cylinder or piston seal.</li> <li>2. Lowering valve is not seating or is partially open.</li> </ol>	<ol style="list-style-type: none"> <li>1. Remove breather - activate to see if there is a continuous flow of oil.</li> <li>2. Clean and inspect.</li> </ol>
Platform goes down slowly.	<ol style="list-style-type: none"> <li>1. Lowering valve not fully open or is clogged.</li> <li>2. Lines are restricted or flow control is clogged.</li> </ol>	<ol style="list-style-type: none"> <li>1. Clean and replace the lowering valve.</li> <li>2. Check for bent or pinched lines. Clean or replace the flow control.</li> </ol>
Bent latch pin	<ol style="list-style-type: none"> <li>1. Latch block welded too far from the Latch pin-allows mechanism to bounce.</li> <li>2. too much down pressure.</li> <li>3. Cylinder leaking.</li> </ol>	<ol style="list-style-type: none"> <li>1. Weld block 1/16 away from pin.</li> <li>2. Set down pressure between 200 psi to 400 psi.</li> <li>3. Remove breather-activate to see if there is a continuous flow of oil.</li> </ol>
Hydraulic oil leak from cylinder rod end.	<ol style="list-style-type: none"> <li>1. Loosen gland nut.</li> <li>2. Cylinder rod pitted.</li> </ol>	<ol style="list-style-type: none"> <li>1. Turn gland nut ½ turn-do not over tighten.</li> <li>2. Replace cylinder.</li> </ol>

# REPLACEMENT PARTS



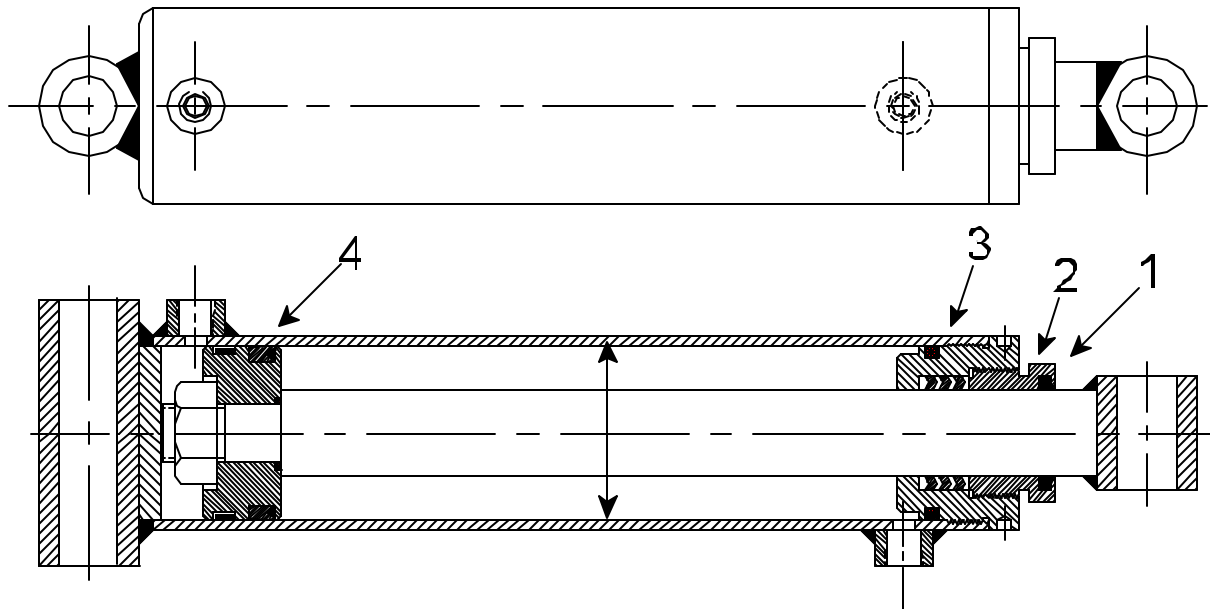
ITEM #	PART #	QTY	DESCRIPTION
1	P33988	1	CYLINDER 1850 GATE
1	P33989	1	CYLINDER 2500 GATE
1	P33990	1	CYLINDER 3000 GATE
1	P33990	1	CYLINDER 3500 GATE
	P43578	3	CYL. BUSHING (FOR ALL CYLINDERS)
2	AA-800-228	1	SHAFT ASSY FOR CYL BASE END
3	AA-800-234	1	SHAFT ASSY FOR CYL ROD END
4	AA-800-230	2	SHAFT ASSY FOR TENSION ARMS
5	AA-800-232	2	SHAFT ASSY FOR COMP. ARM ASSY
6	P25179	1	SPRING RH (1850 has RH spring only)
7	P25178	1	SPRING LH
8	AP-800-235	2	CAM PLATE PIN
9	AP-800-237	2	PLATFORM CAM PIN
10	AP-800-236	2	RAMP PIN
11	P43575	4	GREASELESS BRG. (1" ID)
12	P43576	4	GREASELESS BRG. (1-1/4" ID)

GATE	PART #	PART NAME , DESCRIPTION
1850	P33874	COMPLETE SEAL KIT
2500	P33875	COMPLETE SEAL KIT
3000	P33876	COMPLETE SEAL KIT
3500	P33876	COMPLETE SEAL KIT

## COMPONENTS NOT SOLD SEPARATELY

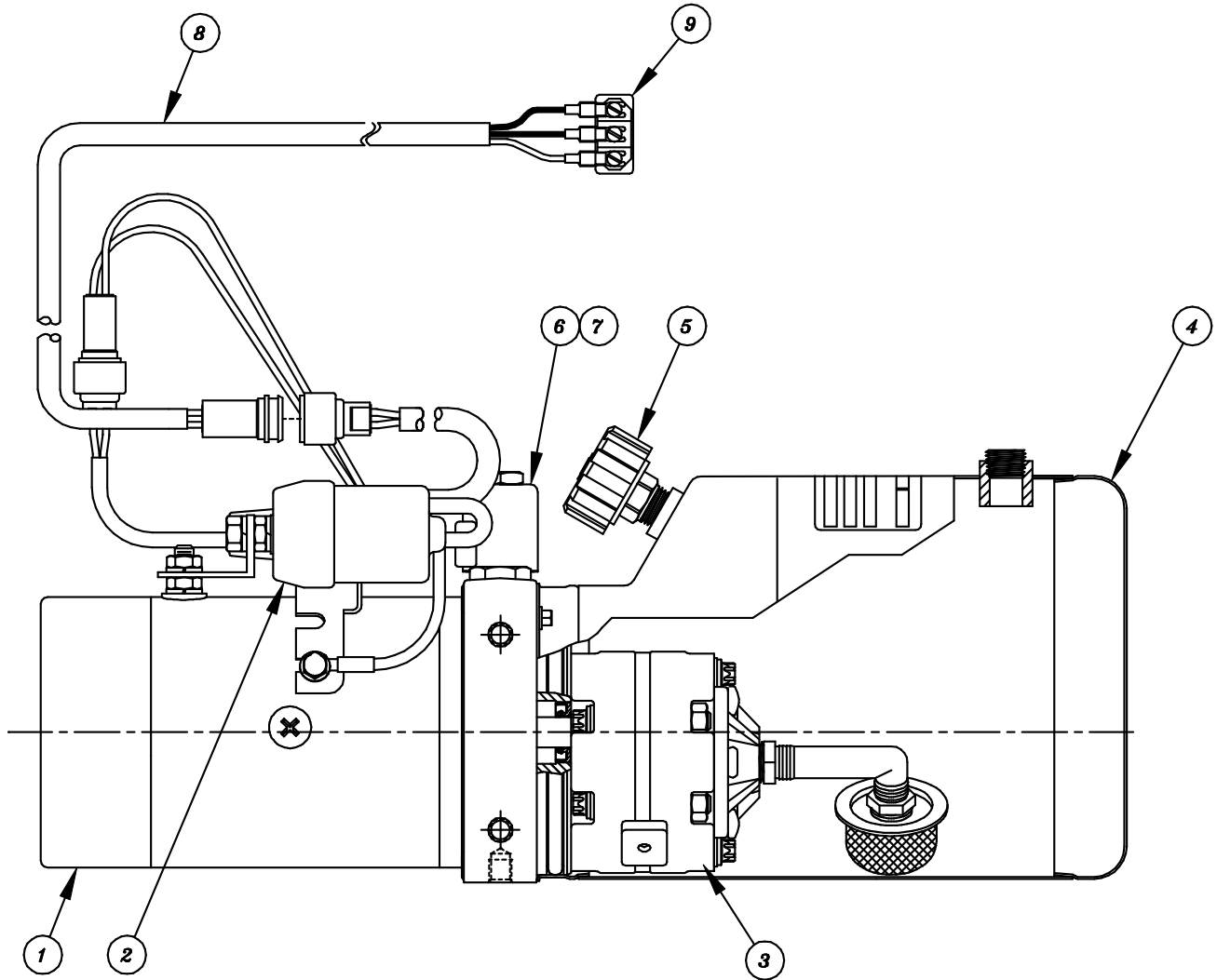
### COMPLETE SEAL KIT CONSISTS OF:

- 1 Wiper
- 2 Packing Gland Nut
- 3 "V" Packing Kit
- 4 Piston Seal





# FENNER/SPX POWER UNIT

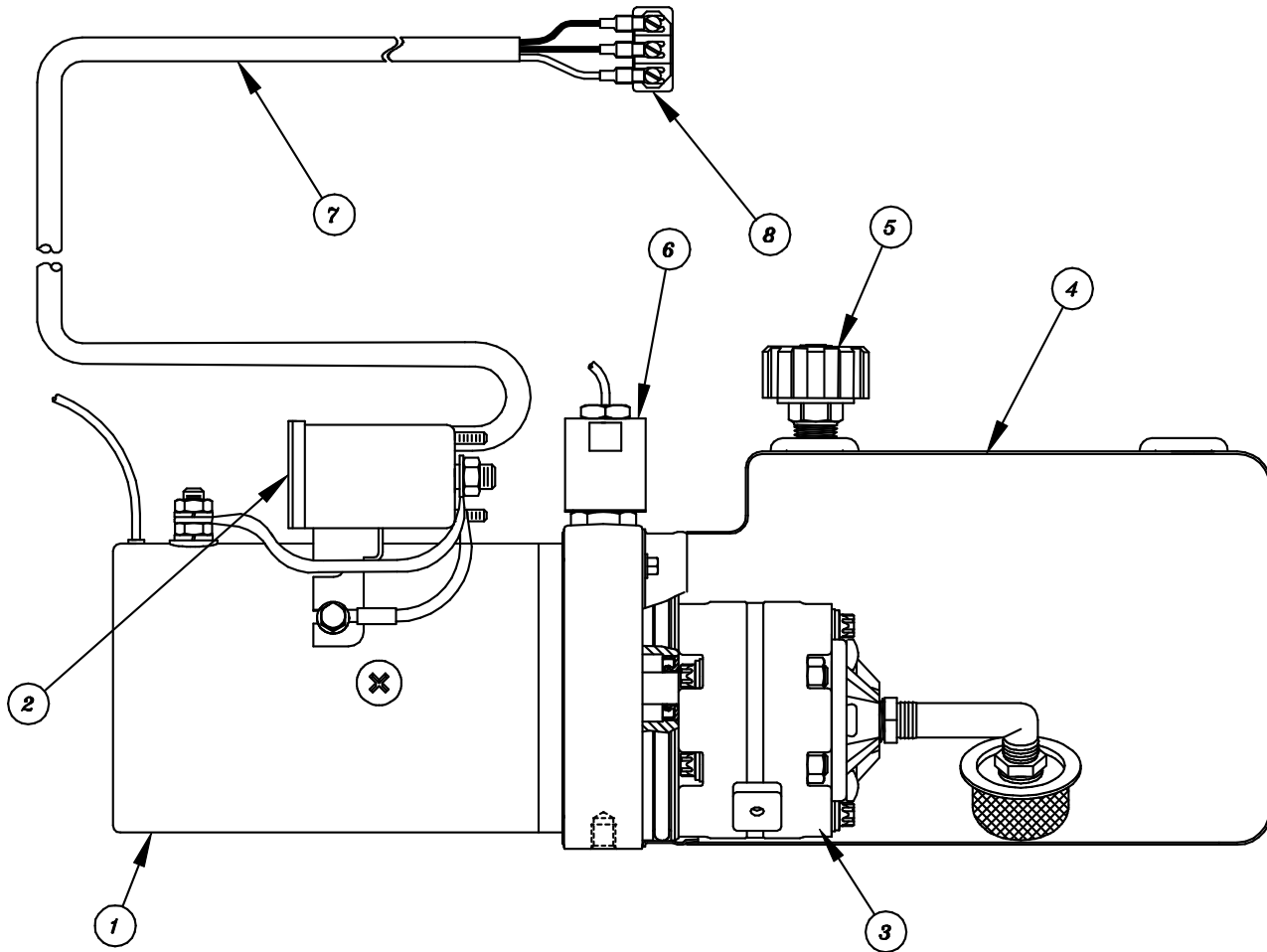


## PARTS LIST

ITEM NO.	PART NO.	DESCRIPTION
	P33967	POWER UNIT (COMPLETE (DOES NOT INCLUDE WIRE HARNESS))
1	P33969	MOTOR
2	P33895	STARTER SOLENOID
3	P33970	PUMP
4	P33971	TANK
5	P33667	BREATHER CAP
6	P33981	VALVE STEM
7	P33982	COIL
	P33973	WIRE HARNESS W/SWITCH (ASSEMBLED AND SEALED)
8	P46563	WIRE HARNESS
9	AA-551-326	TOGGLE SWITCH

# MONARCH POWER UNIT

BLACK MOTOR WITH THERMAL SWITCH PROTECTION

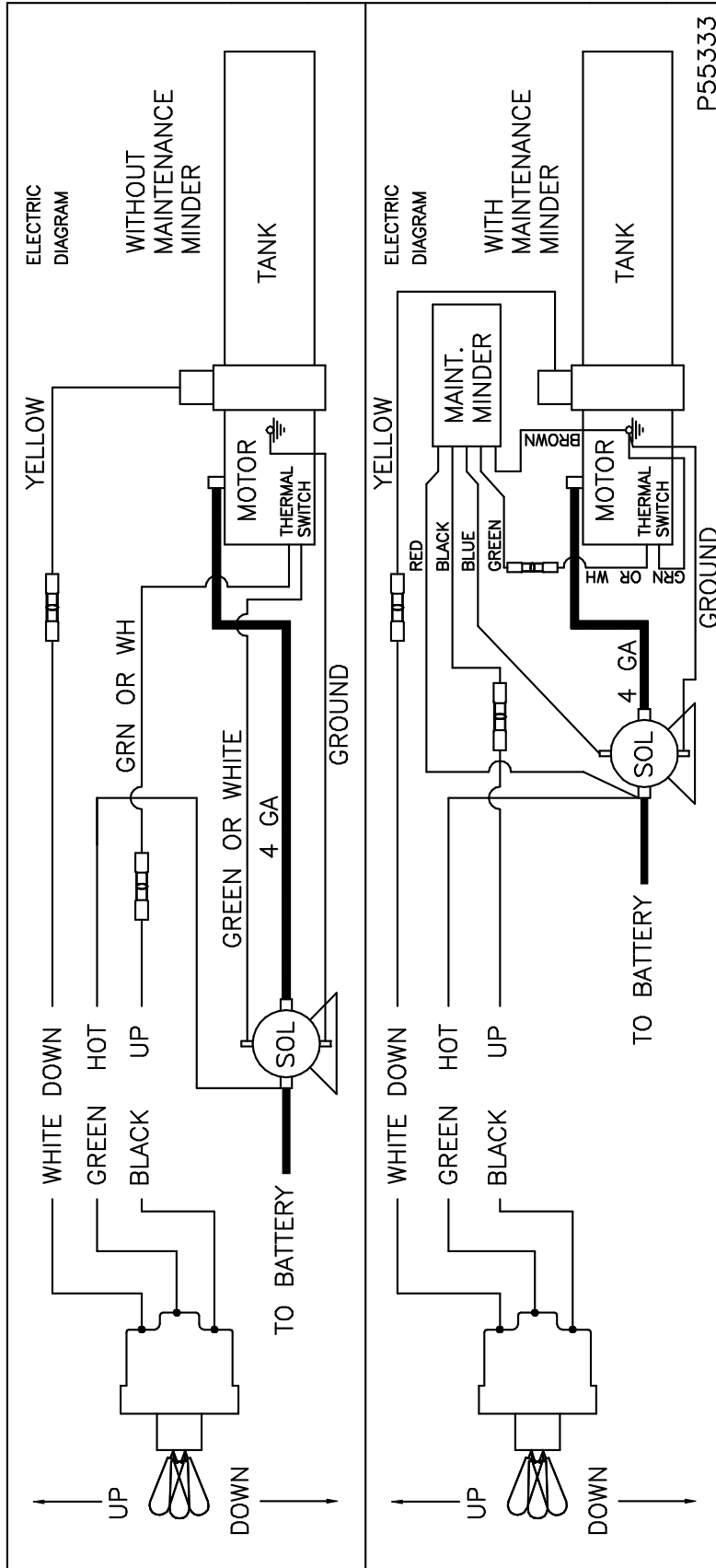


## PARTS LIST

ITEM NO.	PART NO.	DESCRIPTION
	P33991	POWER UNIT (COMPLETE)
1	P33992	MOTOR
2	P34016	STARTER SOLENOID
3	LH150003	PUMP
4	P34018	TANK
5	LH150015	BREATHER CAP
6	LH121	DRAIN VALVE
7	P46600	WIRE HARNESS W/SWITCH
8	AA-551-326	SWITCH



# LH WIRING



LH GATES with MONARCH (BLACK MOTOR) POWER UNIT – THERMAL SWITCH in MOTOR.  
(P33991)

## **RECOMMENDED HYDRAULIC OILS**

---

*Level 1*

*Normal Conditions*

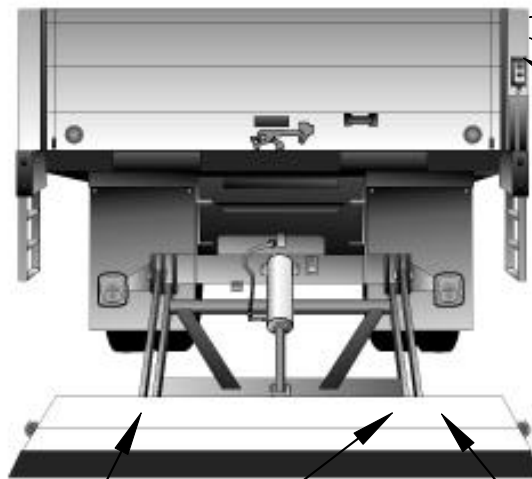
<b><u>Manufacturer</u></b>	<b><u>Type</u></b>	<b><u>Temperature Range</u></b>
Chevron	RYKON ISO-15	-15°F a +150°F
Mobil	DTE-11	-15°F a +150°F
Shell	TELLUS-T15	-15°F a +150°F
Exxon	UNIVIS N15	-15°F a +150°F

*Level 2*

*Cold Conditions*

<b><u>Manufacturer</u></b>	<b><u>Type</u></b>	<b><u>Temperature Range</u></b>
Chevron	AVIATION-A	-50°F a +80°F
Mobil	AERO-HFA	-50°F a +80°F
Shell	AERO FLUID #4	-50°F a +80°F
Exxon	UNIVIS HVI 13	-50°F a +80°F
Mil	H-5606	-50°F a +80°F

## DECAL PLACEMENT



STAND CLEAR  
BOTTOM OF PLATFORM  
P55198 (2)

SECURE LATCH  
P55202

OPERATION OF LIFT GATE  
P55307 and P55242

MAX CAPACITY DECAL

URGENT WARNING  
P55199

READ AND UNDERSTAND  
P55203

SHUT OFF POWER  
P55201