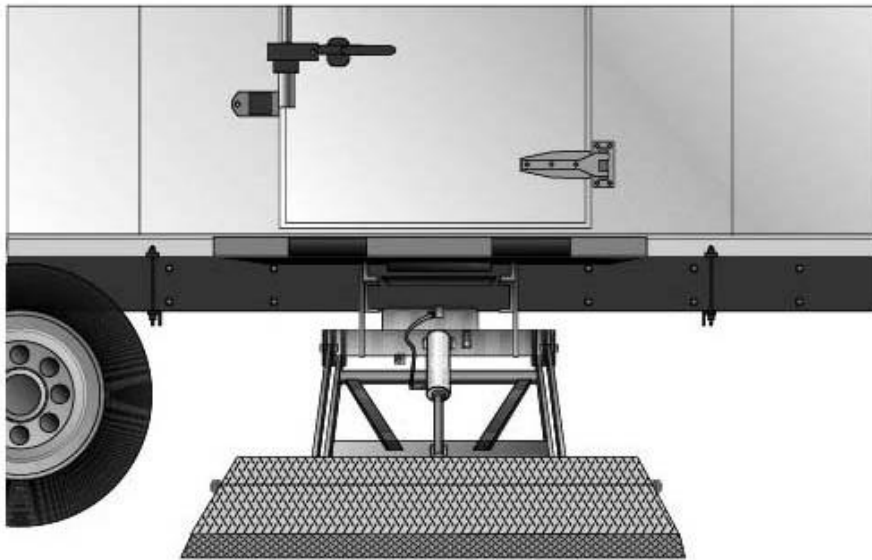




Owner & Parts Manual

TSG Hide-A-Way[®]

Truck Side Gate



10900 Kenwood Road • Cincinnati, OH 45242
Ph: 513.891.6210 • Toll-Free: 866.539.6261
Fax: 513.891.4901
www.leymanlift.com • sales@leymanlift.com

INTRODUCTION

This manual contains the operating procedures on the equipment your company is using that was manufactured by Leyman Manufacturing Corporation.

Past experience has indicated that it is most unwise to operate these units without proper instructions which should be instituted by the purchaser.

While these products have certain safety features engineered into their design, they are all operated by human beings. Therein lies the problem of safety and one should always have caution in mind when operating this or any other machine that has parts that weigh several hundred pounds.

Again, let us remind you that there are moving parts on this product that weigh several hundred pounds. These parts, when not under proper control, can cause physical damage to the operator. Because of the weights that are involved; carelessness and neglect of training can make these units dangerous.

Do not overload this product. Maintain it properly. Stand clear of moving parts. Operate as instructed.

This lift gate has a long life expectancy and will take some abuse. Use good judgement when operating this equipment.

PLEASE FILL IN FOR YOUR RECORDS

CUSTOMER:	_____
MODEL:	_____
CAPACITY:	_____
TYPE:	_____
POWER:	12 VOLT
PLATFORM:	_____
SERIAL #:	_____
OPTIONS:	_____

MAXIMUM HEIGHT	56"
HYDRAULIC PRESSURE	LOADED 2,200 PSI AT THE PUMP
AMP DRAW	LOADED 270 UNLOADED 100

WHEN PLACING PARTS ORDER, YOU WILL NEED THE SERIAL# AND MODEL# OF THE LIFT GATE.

WORDS OF CAUTION

1. BEFORE ANY MAINTENANCE IS PERFORMED ON THIS UNIT, READ AND UNDERSTAND THIS MANUAL COMPLETELY.
2. DO NOT STAND ON OR BEHIND THE PLATFORM WHEN OPERATING GATE IN THE FOLDED POSITION.
3. MAKE SURE THE GROUND IS CLEAR UNDER THE PLATFORM WHEN LOWERING.
4. DO NOT STAND IN FRONT OF PLATFORM WHEN LOWERING FROM VERTICAL POSITION OR OPERATING IN ANY MANNER.
5. NEVER EXCEED THE RATED LOAD CAPACITY OF THIS GATE.
6. DO NOT ALLOW PERSONS TO OPERATE THE UNIT UNLESS THEY HAVE BEEN PROPERLY TRAINED TO DO SO.
7. USE ONLY FACTORY AUTHORIZED PARTS FOR REPLACEMENT.
8. CHECK THE AREA AROUND THE UNIT FOR PERSONS BEFORE OPERATING THE LIFT GATE.
9. THIS LIFT GATE SHOULD OPERATE SMOOTHLY AND THE ONLY NOISE THAT SHOULD BE HEARD IS THE POWER UNIT. ANY AUDIBLE SOUNDS OTHER THAN THE NORMAL POWER UNIT OPERATION SOUND SHOULD BE THOROUGHLY INSPECTED AND THE CAUSE OF THE NOISE SHOULD BE PIN-POINTED AND CORRECTED.
10. DO NOT OVER LOAD— THE MAXIMUM RATED CAPACITY IS BASED ON AN EVENLY DISTRIBUTED LOAD ALL OVER THE PLATFORMS FLAT SURFACE.
11. ALWAYS LOAD AS CLOSE TO THE CENTER OF THE PLATFORM AND AS CLOSE TO THE CENTER OF THE TRUCK SILL AS POSSIBLE.
12. 150 AMP CIRCUIT BREAKER (NOT SUPPLIED) MUST BE INSTALLED BETWEEN THE STARTER SOLENOID AND THE BATTERY SOURCE.
ORDER FROM FACTORY AS OPTION #111 CIRCUIT BREAKER.

WE URGE THE INSTALLATION OF A SAFETY CUT-OFF SWITCH FOR ALL TRUCK MOUNTED LIFT GATES. THESE ARE INSTALLED IN THE CAB OF THE VEHICLE, SO THAT THE POWER TO THE LIFT GATE CAN BE TURNED ON-OFF.

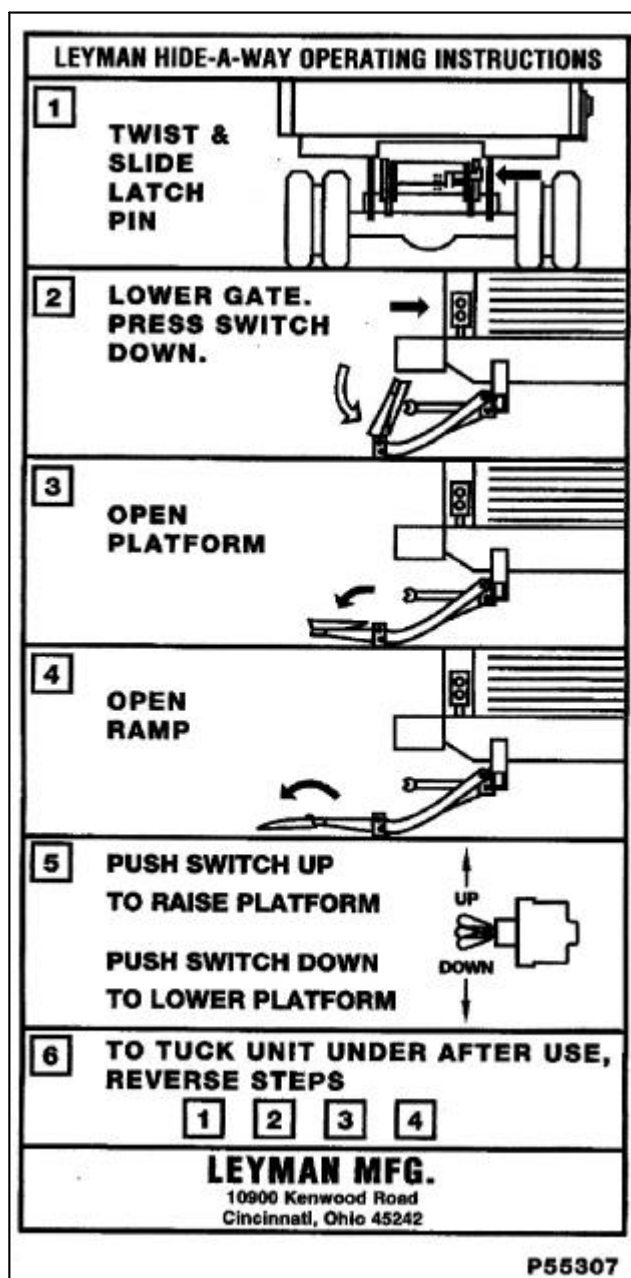
THIS MANUAL REFLECTS MOST CHANGES AND UPDATES OF MATERIALS THAT ARE COMMON TO THIS TYPE OF LIFT GATE. SOME MAY DIFFER DUE TO INDIVIDUAL CUSTOMER REQUIREMENTS. THIS MANUAL HAS BEEN ESTABLISHED TO REFLECT THE COMMON ITEMS.

WARNING SINCE THIS GATE HAS GREASELESS BEARINGS IN THE MAIN PIVOT POINTS, (TENSION AND COMPRESSION ARMS AND CYLINDER PIVOTS) ANY WELDING ON THESE PARTS MUST BE GROUNDED, OR YOU WILL DAMAGE THE CYLINDER.

OPERATION OF THE LIFT GATE

BEFORE OPERATING THE LIFT , READ AND UNDERSTAND THIS DECAL, URGENT WARNING DECAL AND THE OWNERS MANUAL.

DO NOT STAND BEHIND THE LIFT GATE WHILE UNFOLDING OR USING THE PLATFORM.



**TSG TRUCK SIDE GATE
GREASELESS TUCKUNDER**



10900 Kenwood Road · Cincinnati, OH 45242
Ph: 513.891.6210 · Toll-Free: 866.539.6261 · Fax: 513.891. 4901

**SAFETY AND PREVENTATIVE MAINTENANCE INSPECTION
HIDE-A-WAY[®] TRUCK SIDE GATE MODEL TSG
Maintenance by Months**

CUSTOMER:		
LOCATION:		
VEHICLE#:	LIFT GATE MODEL#:	LIFT GATE SERIAL#:

√ = OK A = ADJUSTED N = NOT APPLICABLE X = WRITE UP REPAIR

3 MO	6 MO	12 MO	MOTOR - PUMP COMPONENTS
			Check that battery hold downs are anchored securely
			Check battery(ies) for proper charge level. PROPER CHARGE LEVEL:
			Check all wiring connections for corrosion and tightness (batteries, switches, etc.)
			Check solenoids for loose fittings and operation
			Check reservoir for correct amount of fluid (platform should be down when checking)
			Inspect and check all circuit breakers. Replace if necessary
			Check the charge line/power line for proper operation and connections at both ends
			Remove and clean all pump solenoid cartridges
			Replace hydraulic fluid in reservoir (see owners manual for recommended fluids)
			Check and adjust the relief valve settings. (See owners manual for recommended setting)
			Check brushes and armature in motor. Replace if necessary
			Check amperage draw of motor (see owners manual for recommended amp draw)
3 MO	6 MO	9 MO	LUBRICATION
			Lightly lubricate platform and ramp hinges
3 MO	6 MO	9 MO	LIFT GATE STRUCTURE INSPECTION
			Raise and lower lift gate. Observe for correct operation
			Check Hoses and Fitting for chaffing, rubbing, and leaks
			Check all pivot pins for wear. Replace as necessary
			Check operation of transit latch (safety latch). Repair as necessary
			Check up and down cylinder for leaks. Repack or replace cylinder
			Inspect for broken and/or missing roll pins
			Inspect for worn bushings in compression and tension arms. Replace as necessary
			Steam clean gate. Repair and structural welds as needed
			Repaint where needed and replace any worn or missing safety decals

SERVICED BY: _____ DATE: _____

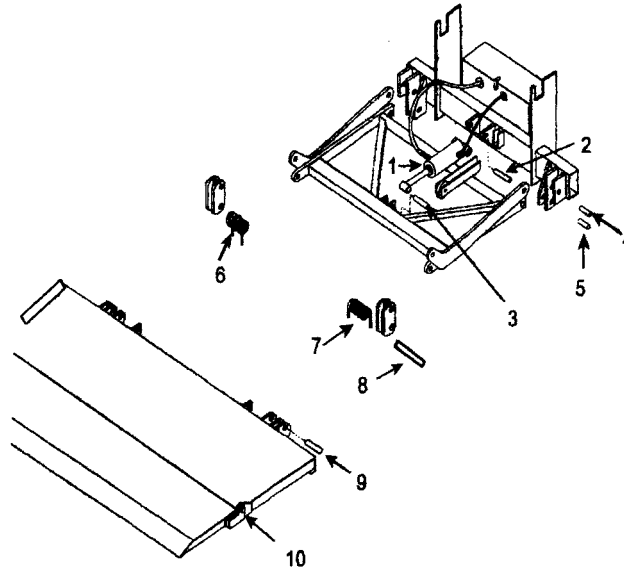
Form Sep-02

TROUBLE SHOOTING CHART

ALL TSG MODELS

PROBLEM	PROBABLE CAUSE	REMEDY
The motor is running, but the platform will not go up, or reach floor of vehicle or gate will not lift rated load.	<ol style="list-style-type: none"> 1. Insufficient oil in power unit tank. 2. Lowering valve stuck partially or fully open. 3. Power unit relief valve is set too low. 	<ol style="list-style-type: none"> 1. Fill tank. 2. Clean or replace. 3. Turn screw in all the way-then back off one turn.
The platform will not go up or reach floor level and the motor does not run.	<ol style="list-style-type: none"> 1. Battery is low. 2. Power line is loose. 3. Poor switch connections. 4. Cab switch is turned off. 5. Defective starter solenoid. 6. Tripped circuit breaker. 	<ol style="list-style-type: none"> 1. Recharge the batteries. 2. Check the connection, if loose tighten. Also check for corrosion and clean if necessary. 3. See #2 4. Turn the switch on. 5. Replace part 6. Reset the circuit breaker.
Platform will not lower.	<ol style="list-style-type: none"> 1. Battery is low. 2. Bad ground or electrical connection. 3. Lowering valve is bad. 	<ol style="list-style-type: none"> 1. Recharge the batteries. 2. Check for corrosion and tighten. 3. Check the coil.
Platform creeps downward.	<ol style="list-style-type: none"> 1. Defective cylinder or piston seal. 2. Lowering valve is not seating or is partially open. 	<ol style="list-style-type: none"> 1. Remove breather - activate to see if there is a continuous flow of oil. 2. Clean and inspect.
Platform goes down slowly.	<ol style="list-style-type: none"> 1. Lowering valve not fully open or is clogged. 2. Lines are restricted or flow control is clogged. 	<ol style="list-style-type: none"> 1. Clean and replace the lowering valve. 2. Check for bent or pinched lines. Clean or replace the flow control.
Bent latch pin	<ol style="list-style-type: none"> 1. Latch block welded too far from the Latch pin-allows mechanism to bounce. 2. too much down pressure. 3. Cylinder leaking. 	<ol style="list-style-type: none"> 1. Weld block 1/16 away from pin. 2. Set down pressure between 200 psi to 400 psi. 3. Remove breather-activate to see if there is a continuous flow of oil.
Hydraulic oil leak from cylinder rod end.	<ol style="list-style-type: none"> 1. Loosen gland nut. 2. Cylinder rod pitted. 	<ol style="list-style-type: none"> 1. Turn gland nut ½ turn-do not over tighten. 2. Replace cylinder.

REPLACEMENT PARTS



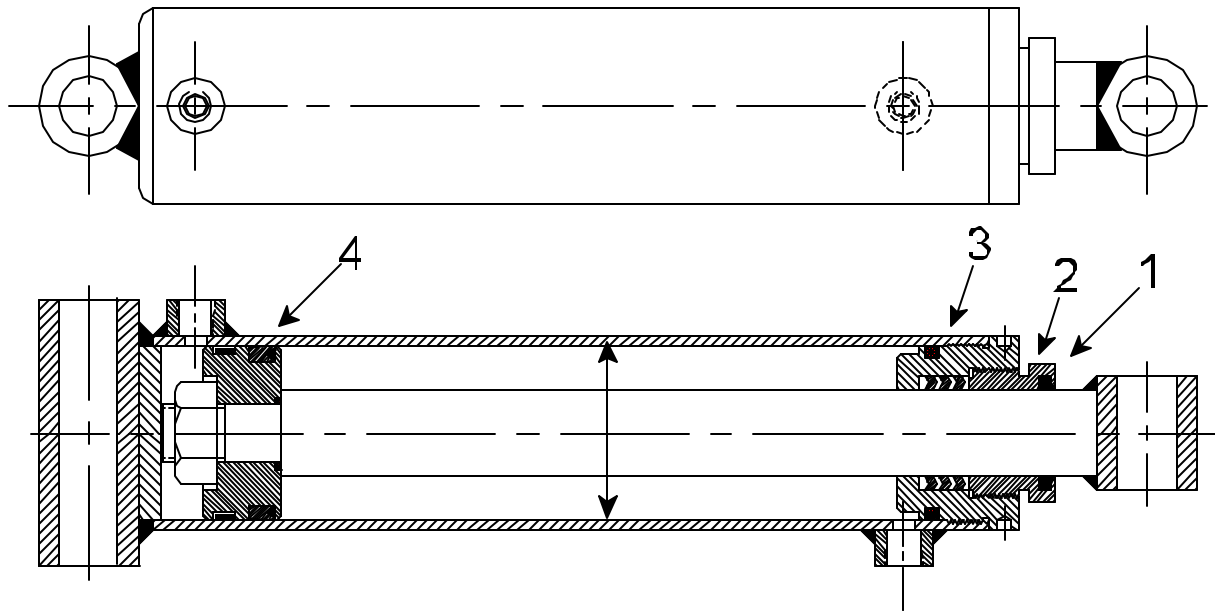
ITEM #	PART #	QTY	DESCRIPTION
1	P33988	1	CYLINDER 1850 GATE
1	P33989	1	CYLINDER 2500 GATE
1	P33990	1	CYLINDER 3000 GATE
1	P33990	1	CYLINDER 3500 GATE
	P43578	3	CYL. BUSHING (FOR ALL CYLINDERS)
2	AA-800-228	1	SHAFT ASSY FOR CYL BASE END
3	AA-800-234	1	SHAFT ASSY FOR CYL ROD END
4	AA-800-230	2	SHAFT ASSY FOR TENSION ARMS
5	AA-800-232	2	SHAFT ASSY FOR COMP. ARM ASSY
6	P25179	1	SPRING RH (1850 has RH spring only)
7	P25178	1	SPRING LH
8	AP-800-235	2	CAM PLATE PIN
9	AP-800-237	2	PLATFORM CAM PIN
10	AP-800-236	2	RAMP PIN
11	P43575	4	GREASELESS BRG. (1" ID)
12	P43576	4	GREASELESS BRG. (1-1/4" ID)

GATE	PART #	PART NAME , DESCRIPTION
1850	P33874	COMPLETE SEAL KIT
2500	P33875	COMPLETE SEAL KIT
3000	P33876	COMPLETE SEAL KIT
3500	P33876	COMPLETE SEAL KIT

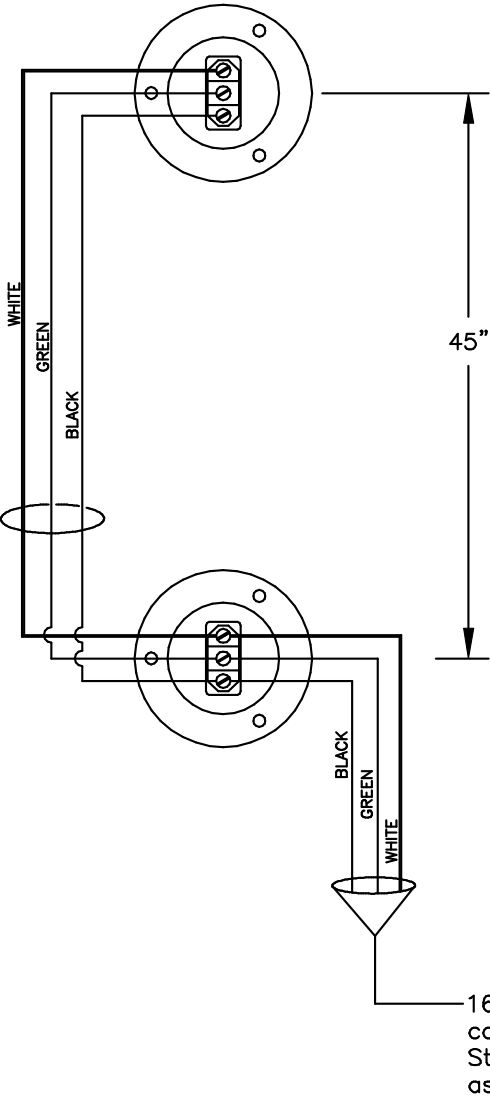
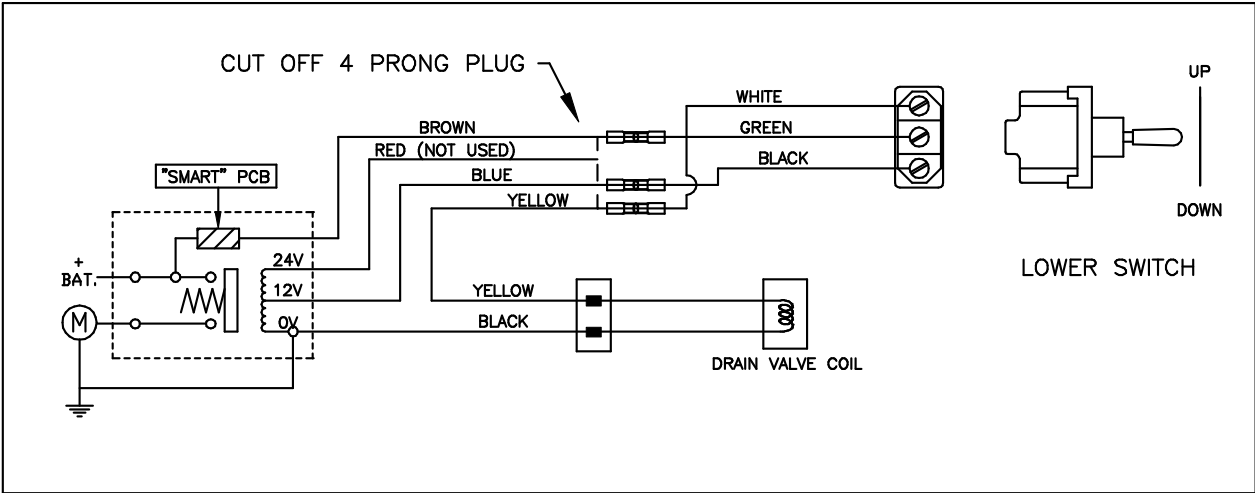
COMPONENTS NOT SOLD SEPARATELY

COMPLETE SEAL KIT CONSISTS OF:

- 1 Wiper
- 2 Packing Gland Nut
- 3 "V" Packing Kit
- 4 Piston Seal



TSG WIRING SPX/FENNER POWER UNIT (GOLD MOTOR)

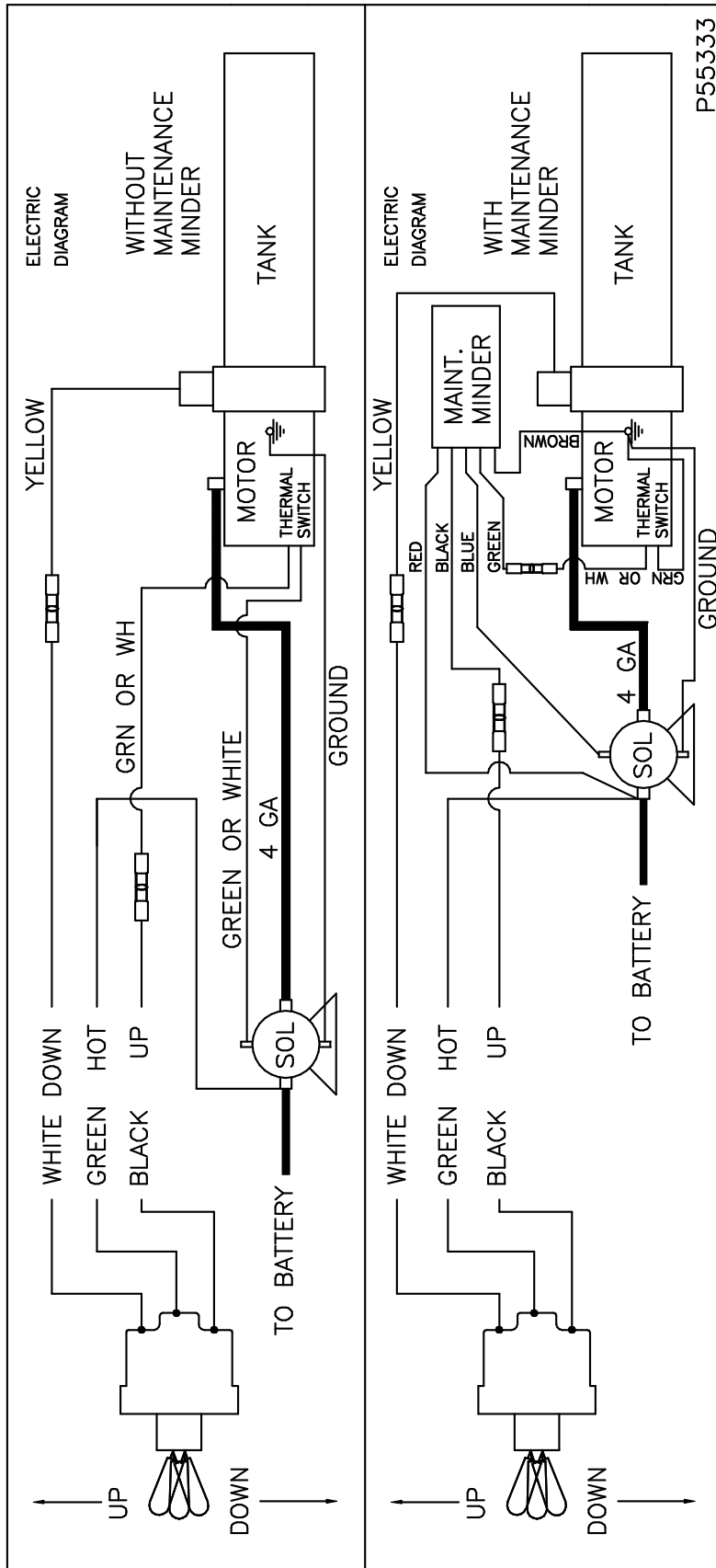


PARTS LIST	
PART NO.	DESCRIPTION
P33967	POWER UNIT-COMplete
P33969	MOTOR
P33970	PUMP ASSY
P33971	HYD TANK
P33667	BREATHER CAP
P33972	SOLENOID AND VALVE ASSY
P33895	STARTER SOLENOID-FOR MOTOR
AA-551-326	TOGGLE SWITCH w/BOOT

Locate lower switch approx. 8" above floor

16-3 cable connected to Starter Solenoid as shown above

TSG WIRING

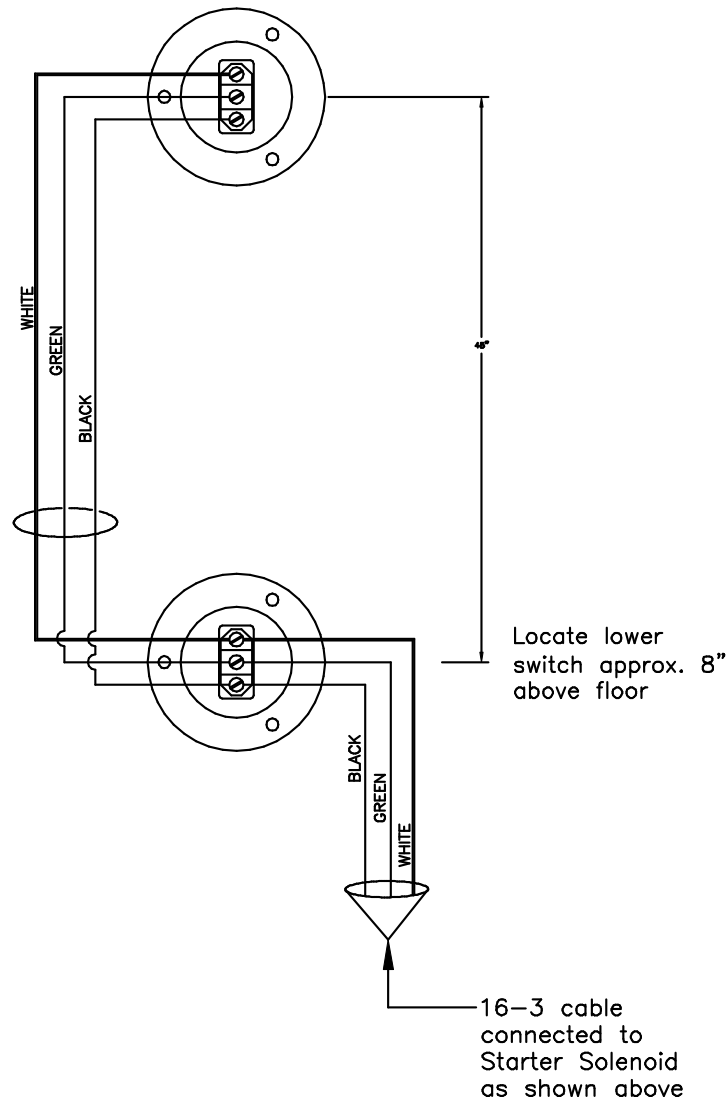


P55333

MONARCH POWER UNIT
 (BLACK MOTOR WITH THERMAL PROTECTION)

MONARCH POWER UNIT (CONT.)

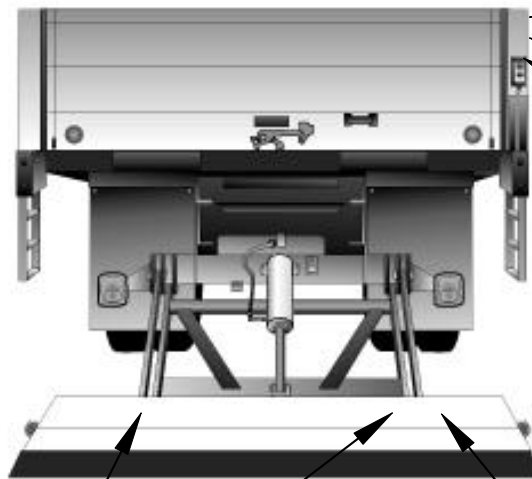
(BLACK MOTOR WITH THERMAL PROTECTION)



PARTS LIST

ITEM NO.	PART NO.	DESCRIPTION
	P33991	POWER UNIT (COMPLETE)
1	P33992	MOTOR
2	P34016	STARTER SOLENOID
3	LH150003	PUMP
4	P34018	TANK
5	LH150015	BREATHER CAP
6	LH121	DRAIN VALVE
7	BA-551-323	TOGGLE SWITCH ELECT.
8	AA-551-326	SWITCHES
9	P46292	RECESSED HSE.

DECAL PLACEMENT



STAND CLEAR
BOTTOM OF PLATFORM
P55198 (2)

SECURE LATCH
P55202

OPERATION OF LIFT GATE
P55307 and P55242

MAX CAPACITY DECAL

URGENT WARNING
P55199

READ AND UNDERSTAND
P55203

SHUT OFF POWER
P55201